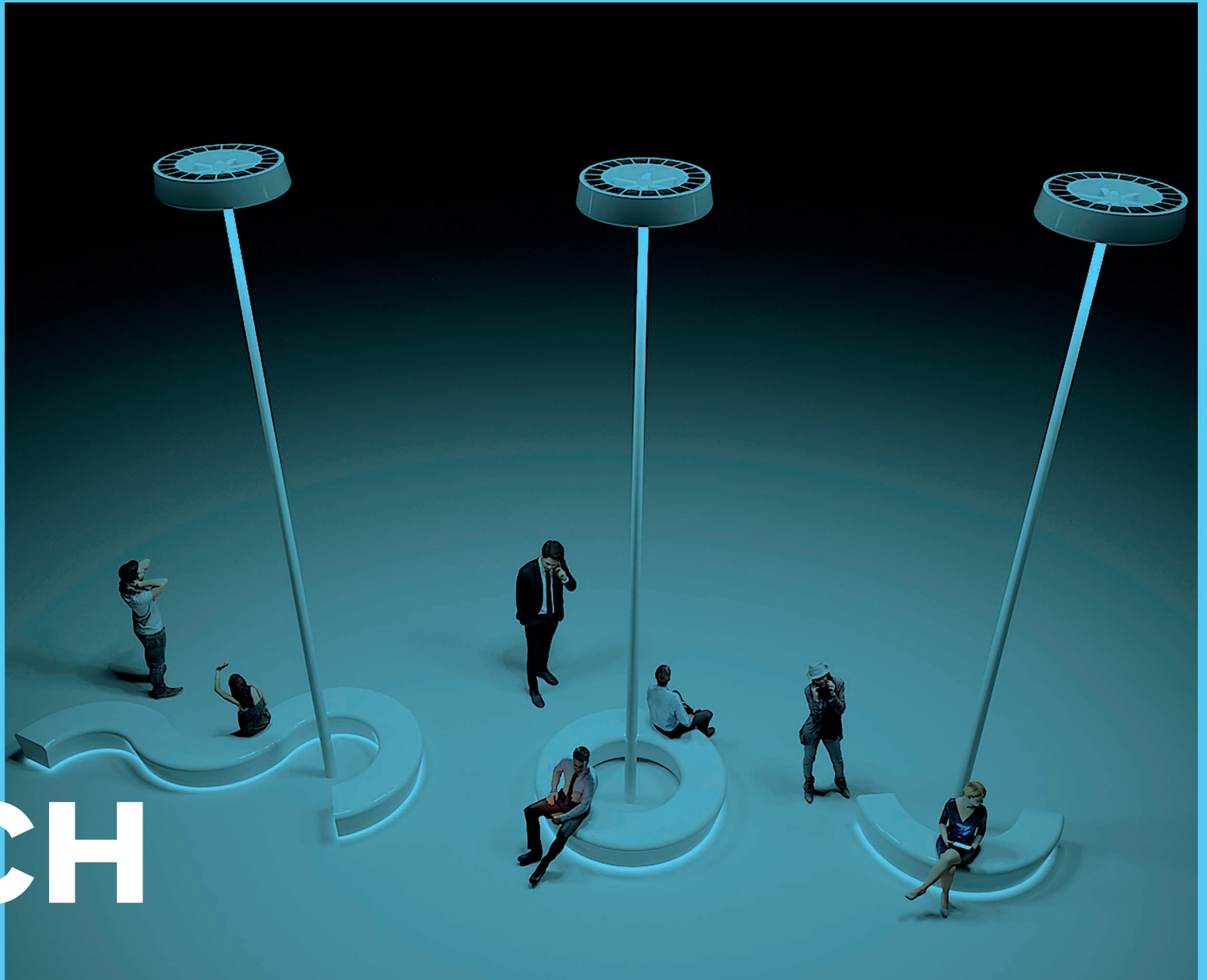


Omniflow®

OMNI BENCH



smart city
& sustainable mobility

www.omniflow.io

OMNI BENCH

Omnibench is a urban furniture design for public spaces patented by Omniflow.

The contemporary design is inspired in the Omniled smart platform shape and can interact with this product with multiple optional features like, bottom light, USB or wireless charging points and electric bicycles docking stations.

The water tight bench can be opened and be used for other technical purposes like the installation of a camouflaged base station for a telecommunications provider or simply more batteries.

The Omnibench can be filled with sand/water or simply bolted to the ground.

Body Shell

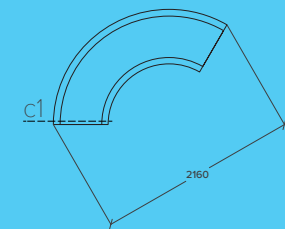
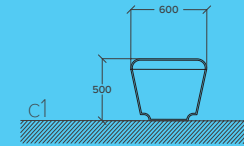
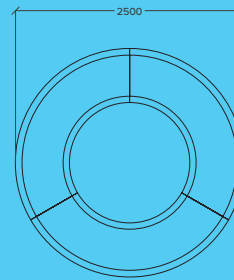
Material	Composite Fiberglass/Resin Transparent to radio waves
Finishing	Marine grade gel coat
Color	RAL 9010
Space inside	Can fit 3 (Three) objects up to: 500 x 500mm 1,25 m (external radius)

General

Dimensions	0.5m height, 2.16m maximum length
Weight	50Kg per module
Mounting	Mounts: Bolted to the ground Fill with water Fill with sand
Transportation	Package dimensions: 2.20m x 0.95m x 0.50m Up to 6 units stackable

Optional Accessories	<ul style="list-style-type: none"> - Bottom lighting (bench) - E-Bike Charging Station - E-Scooter Charging Station - USB Charger ports - Wireless Charger - Wifi Ethernet Router AP - Wifi Ethernet Fiberoptic Router AP - LoRA Gateway (under consultation) - Transmission - 4G Modem, ethernet, fiber, P2P, P2MP - Small Cell integration (under consultation)
----------------------	---

www.omniflow.io



Configuration options

